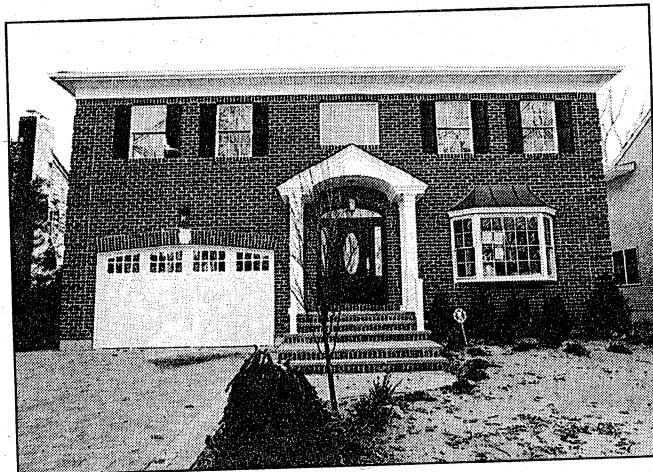


Custom Village Homes Corp. will finish this four-bedroom brick home in Rockville Centre this month. The 3,900-square-foot house is priced at \$1.7 million.



NEWSDAY PHOTOS /
ROBERT MECEA

Amenities abound in upscale Colonial



NEW
CONSTRUCTION
**LAURA
KOSS-FEDER**

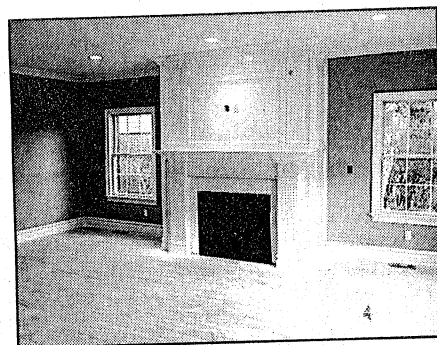
A Georgian Colonial home in Rockville Centre, convenient to the downtown area and with a 35-minute commute to Manhattan by train, is available for sale at 96 Arrandale Rd.

Construction on the two-story brick home is to be completed this month, says builder Noel Cooperstein, president of Custom Village Homes Corp. in East Meadow.

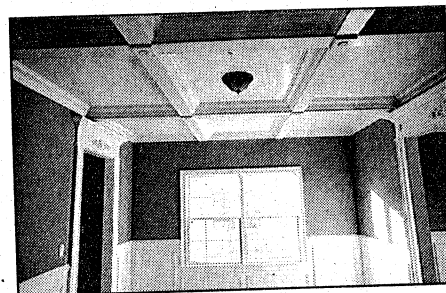
The asking price for the 3,900-square-foot house is \$1.7 million. It has four bedrooms and 2½ bathrooms and is located on a 60-by-100-foot plot. There is also a two-car garage, an unfinished basement, oak floors, a two-story entrance, a kitchen with granite countertops, a family room with a fireplace, custom moldings throughout, a second-floor laundry room, a walk-in closet in the master bedroom, and a master bathroom with an oversized whirlpool tub, a double vanity and a glass-enclosed shower.

The house also has a central vacuum and a fully installed alarm system and is wired for the Internet and for a sound system, Cooperstein adds. It has two-zone gas heat and two-zone central air-conditioning. The home is fully landscaped and has a rear patio.

"This home will appeal to an upscale clientele looking for many amenities and lots of space," Cooperstein says. "It also will attract those who want to be near the Village of Rockville Centre and have an easy commute to Manhattan."



The family room, above, features a fireplace, and there are custom moldings throughout the house.



The house is a five-minute drive to shops, restaurants and movies. It also is the same distance to the Rockville Centre stop of the Long Island Rail Road. It is in the Rockville Centre school district. Taxes are estimated at \$20,000.

Cooperstein is handling sales directly. He can be reached at 516-221-0264.

SEND information on new construction to Valerie Kellogg, shelter editor, Newsday, 235 Pinelawn Rd., Melville, NY 11747, or kellogg@newsday.com or fax 631-843-5459.